

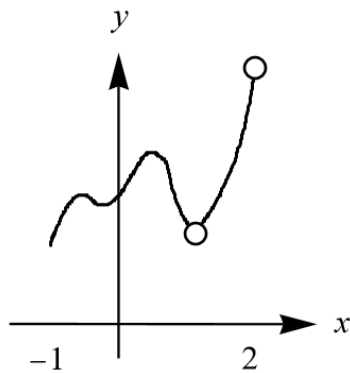
**Exercise 14**

- (a) Sketch the graph of a function that has two local maxima, one local minimum, and no absolute maximum.
- (b) Sketch the graph of a function that has three local minima, two local maxima, and seven critical numbers.
- 

**Solution**

Recall that a critical number is one where the tangent line to the curve is horizontal or vertical.

Two local maxima,  
one local minimum, and  
no absolute maximum



Three local minima,  
two local maxima, and  
seven critical numbers

